

## Bamboo wardrobe - Bamboo collection

design Diego Maria Piovesan



Made to measure wardrobe defined by sequences of decorative channels and elliptical bars customizable in size and finishes.  
Available tailor-made with customizable accessories, equipment and internal finishes, and with integrated LED lighting..

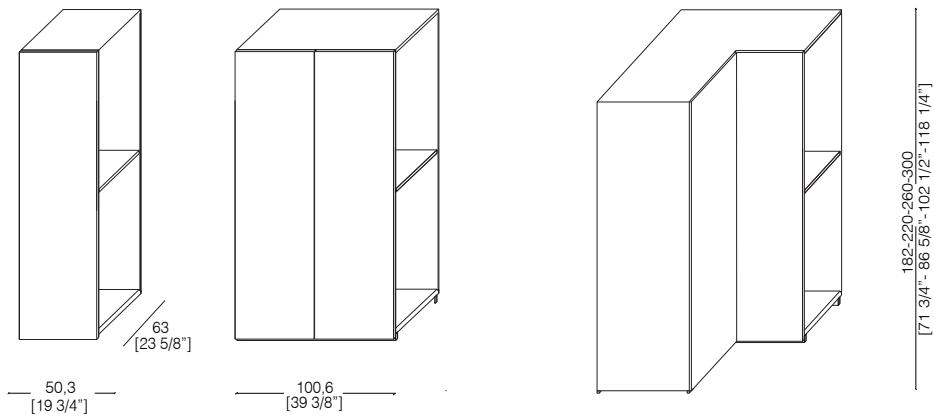
Sistema armadio su misura definito da sequenze di canali decorativi e da masselli ellittici personalizzabili in dimensioni e finiture. Disponibile su misura con accessori, attrezzature e finiture interne personalizzabili, e con illuminazione LED integrata.



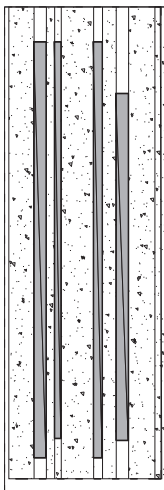
\_dimensions

**columns**

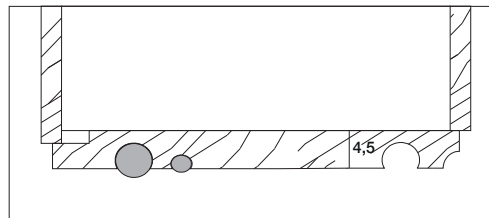
colonne - colonnes - Säulen - колонны



**matt lacquered bamboo door**

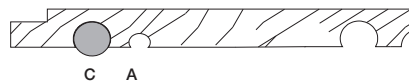


**handles detail**



**channels details**

A 2,5 x 2 cm h.100/120/140/160  
C 4,5 x 4 cm h.100/120/140/160

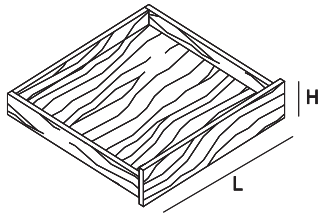


-Dimensions in centimeters and inches.  
The right to discontinue and make changes is reserved.  
This information is based on the latest product information available at the time of printing.

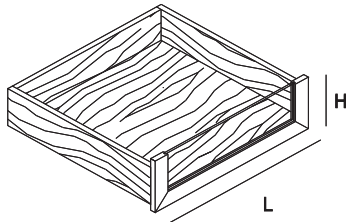
\_dimensions

components

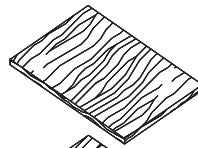
**internal drawer**  
L. 34 / 49 / 79 / 94 / 109  
H. 10 / 14,5 / 19 / 28



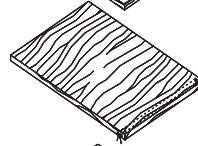
**internal drawer with crystal front**  
L. 34 / 49 / 79 / 94 / 109  
H. 10 / 14,5 / 19 / 28



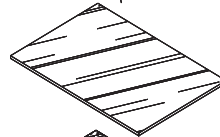
**shelf**  
L. 42,5 / 57,5 / 87,5 / 102,5 / 117,5



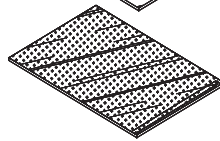
movable shelf



fixed shelf with led



movable acid-etched crystal shelf

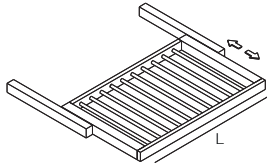


movable smoked glass shelf

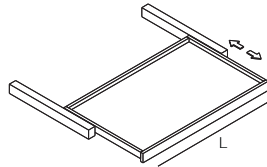
-Dimensions in centimeters and inches.  
The right to discontinue and make changes is reserved.  
This information is based on the latest product information available at the time of printing.

\_dimensions

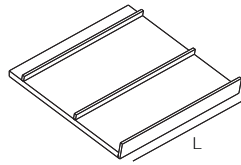
components



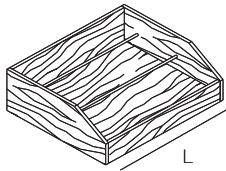
internal trouser rack tray  
L. 34 / 49 / 79 / 94 / 109



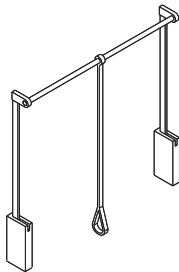
internal pull-out shelf  
L. 34 / 49 / 79 / 94 / 109



sloping shoe rack shelf  
L. 42,5 / 57,5 / 87,5 / 102,5 / 117,5



internal shoe rack drawer  
L. 34 / 49 / 79 / 94 / 109



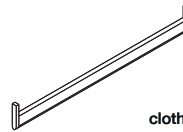
pull down clothes  
hanging rail



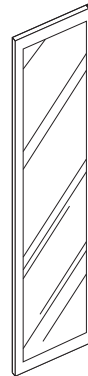
led bar



power supplier for led bar



clothes hanging rails

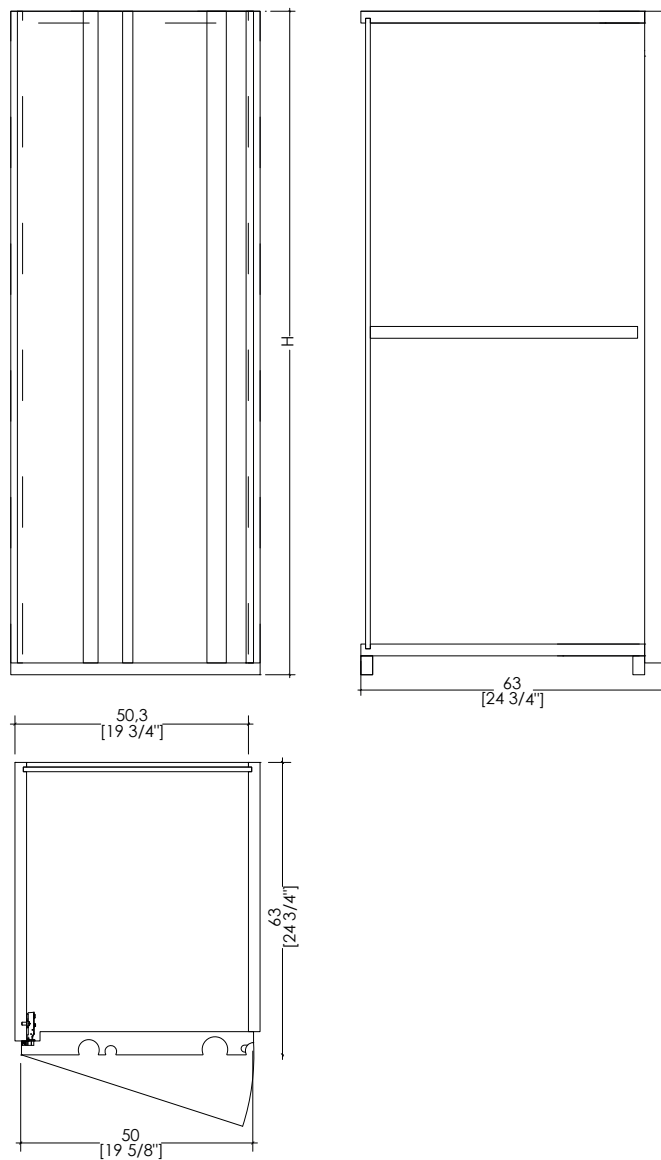


mirror with silver finish  
for hinged door

-Dimensions in centimeters and inches.  
The right to discontinue and make changes is reserved.  
This information is based on the latest product information available at the time of printing.

\_dimensions

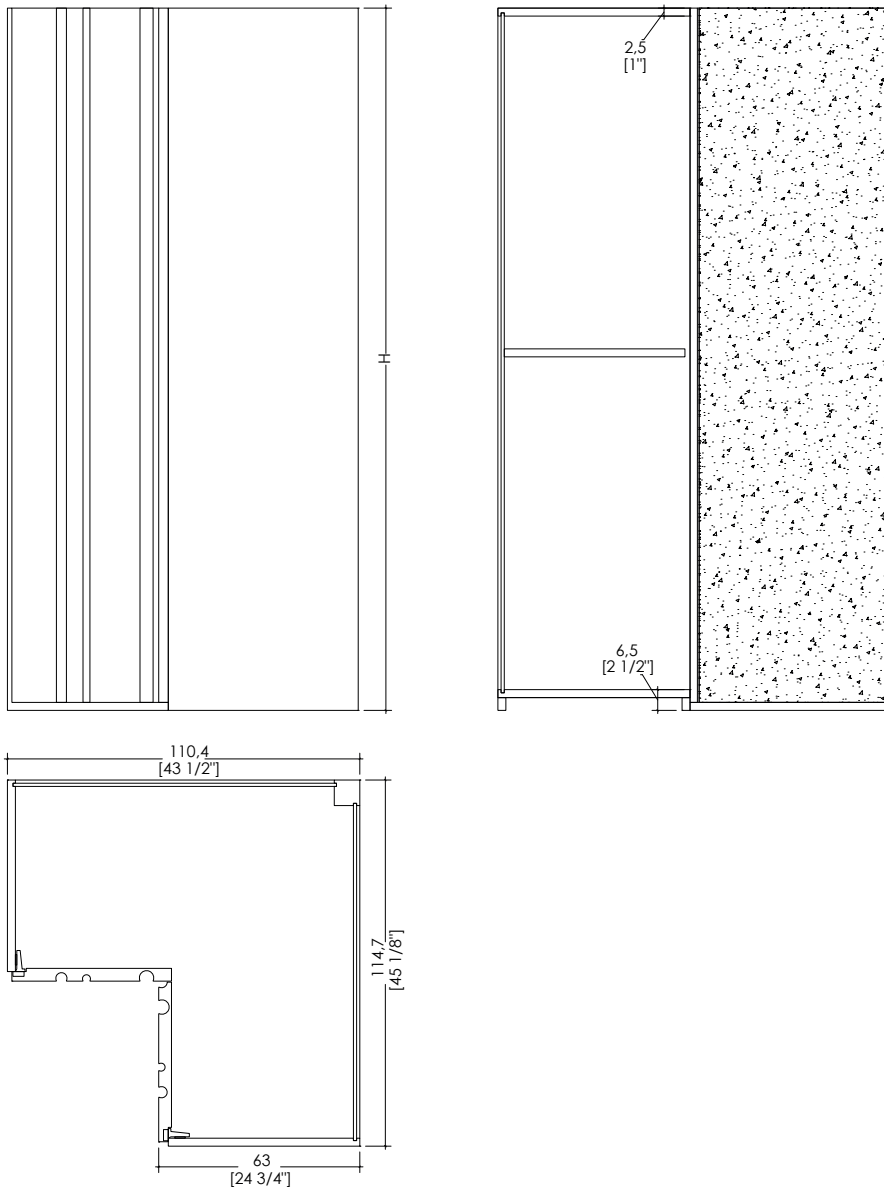
element for hight storage unit



-Dimensions in centimeters and inches.  
The right to discontinue and make changes is reserved.  
This information is based on the latest product information available at the time of printing.

\_dimensions

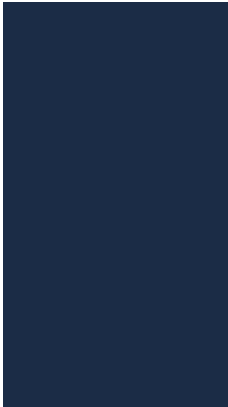
element for corner high storage unit



-Dimensions in centimeters and inches.  
The right to discontinue and make changes is reserved.  
This information is based on the latest product information available at the time of printing.

\_materials & finishes

matt lacquered



Matt lacquered



Available in all  
RAL / NCS colors

\_The finishes shown are indicative and refer to the entire production range.  
Laurameroni reserves the right to modify the range without warning.

\_maintenance

**PAINTS, LACQUERINGS AND  
SPECIAL FINISHES**

Do not use acid or alkaline detergents, agents with bleaching additives, abrasive powders, steel wool, sponges or the like. Do not use furniture polish or solvents to care for painted surfaces. Anything hot or humid can cause surface damage. Pointed or sharp objects, such as blades or knives, can cause damage to the surface. For the cleaning and care, regularly wipe the surfaces with a clean, soft, lint-free cloth to remove dust while avoiding abrasion. For soft-finish painted surfaces, use a soft, lint-free, slightly damp cloth. If heavily soiled, painted surfaces can be cleaned with a neutral, silicone-free detergent. Finally, it is essential to gently rub dry surfaces, so that there is no residual moisture.

**TINTE, LACCATURE E FINITURE  
SPECIALI**

Non usare detersivi acidi o alcalini, agenti con additivi sbiancanti, polveri abrasive, lana d'acciaio, spugne o simili. Non utilizzare lucidi per mobili o solventi per la cura delle superfici verniciate. Qualsiasi cosa calda o umida può causare danni alla superficie. Oggetti appuntiti o taglienti, come lame o coltelli, possono causare danni alla superficie. Per la pulizia e la cura, pulire regolarmente le superfici con un panno pulito, morbido e privo di lanugine per rimuovere la polvere evitando l'abrasione. Per le superfici verniciate con finitura morbida, utilizzare un panno soffice, privo di lanugine e leggermente umido. Se molto sporche, le superfici verniciate possono essere pulite con un detersivo neutro privo di silicone. È infine essenziale strofinare gentilmente le superfici asciutte, in modo che non sussista umidità residua.

**BEDIF  
FEREN  
TBEUN  
IQUE.**

LAURAMERONI s.r.l.  
22040 Alzate Brianza (Como)  
Via Manzoni, 2784  
T +39 031 761450  
info@laurameroni.com  
www.laurameroni.com