

## Bamboo sliding door - Bamboo collection

design DMP Design



— Matt lacquered or wood veneered sliding door with channels on both sides and rail in polished chrome steel. Available in both the single leaf and double leaf models. It is available in all woods of the collection or matt lacquered in all RAL colours.

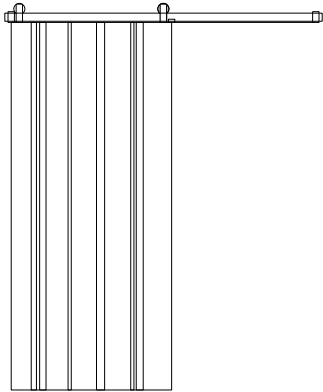
This sliding door is not only a functional object but rather a design element to reinterpret and decorate space, ideal for clients looking for innovative solutions. Bamboo Door, similarly to the wall panels, has a series of channels of different sizes that cut across the surface, each time creating different designs. The introduction of bars lacquered in a variety of colours makes it possible to create an endless number of combinations.



— Porta scorrevole laccata opaco o impiallacciata in legno con canali su entrambi i lati e binario di scorrimento in acciaio cromato lucido. Disponibile nella versione porta singola o doppia. La porta Bamboo può essere realizzata in tutti i legni lisci della collezione o laccata opaco in tutti i colori RAL.

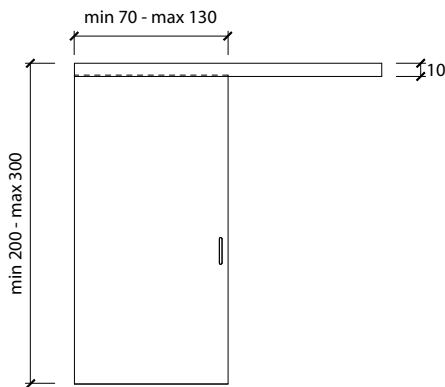
Questa porta scorrevole non è solo un oggetto funzionale, ma piuttosto un elemento di design per reinventare e decorare lo spazio, ideale per clienti alla ricerca di soluzioni innovative. La porta Bamboo, in modo simile alla boiserie, è caratterizzata da una serie di canali di diversa dimensione che attraversano la superficie creando un design sempre diverso. L'uso di barre laccate in diversi colori consente così di realizzare un numero infinito di combinazioni cromatiche.

\_range

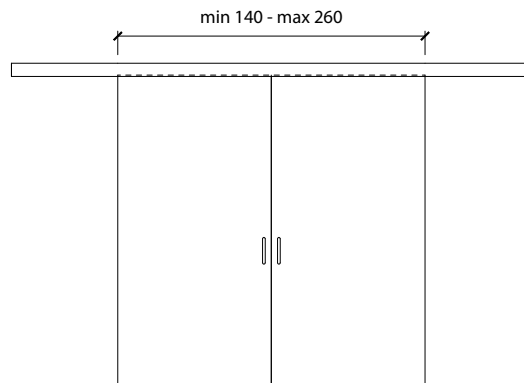


DP 310 A sliding door - porta scorrevole  
porte coulissante - Schiebetür - раздвижная дверь

\_dimensional limits



single sliding door



symmetrical double sliding door

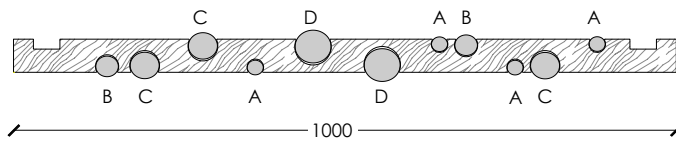
**Dimensions in centimeters.**

The right to discontinue and make changes is reserved.

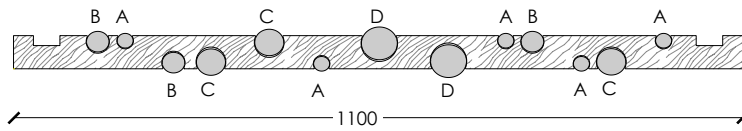
This information is based on the latest product information available at the time of printing.

\_dimensions

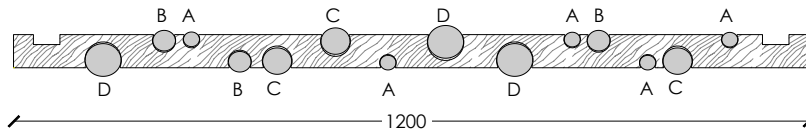
door L. 1000



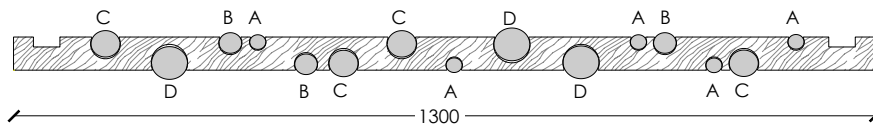
door L. 1100



door L. 1200



door L. 1300



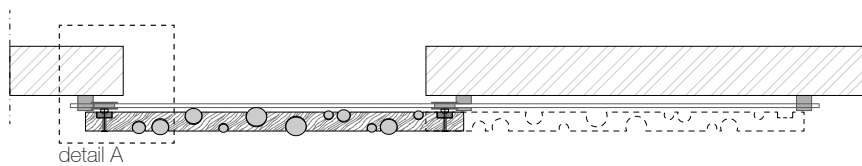
Dimensions in millimeters.

The right to discontinue and make changes is reserved.

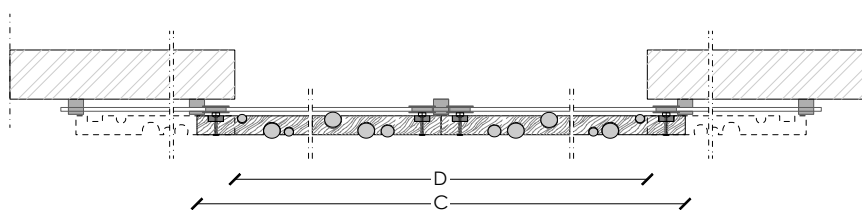
This information is based on the latest product information available at the time of printing.

dimensions

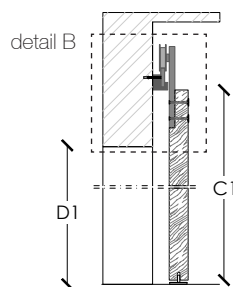
single sliding door



double sliding door



vertical section



legend

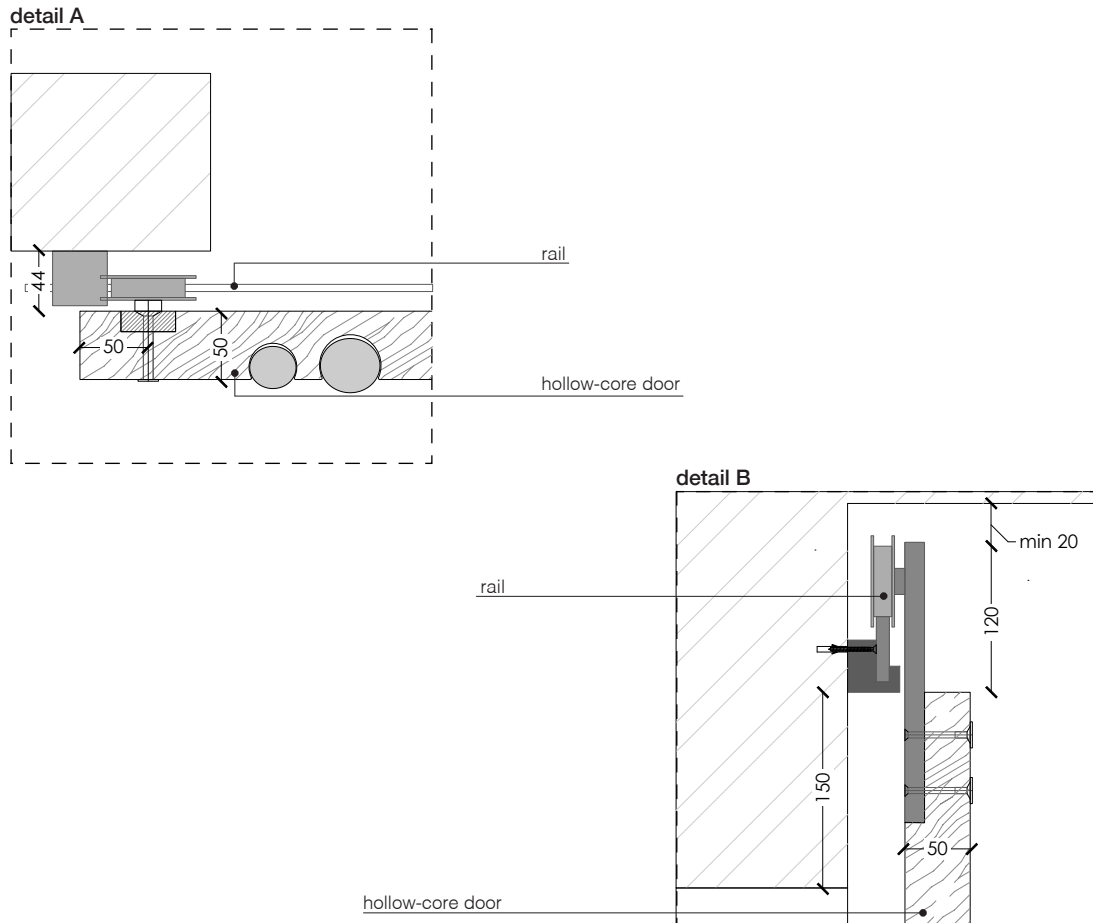
C = door	D + 100 mm min
D = door way	
C = door	D + 150 mm min
D = door way	

Dimensions in millimeters.

The right to discontinue and make changes is reserved.

This information is based on the latest product information available at the time of printing.

\_details



**Dimensions in millimeters.**

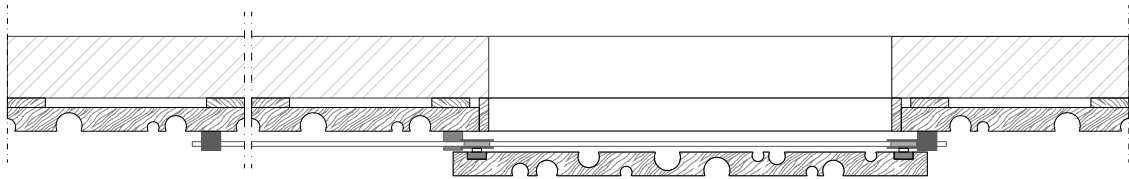
The right to discontinue and make changes is reserved.

This information is based on the latest product information available at the time of printing.

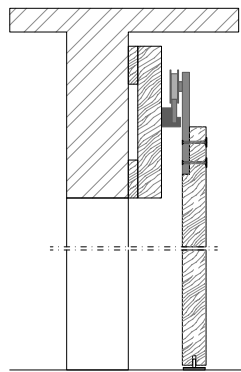
\_special case

sliding door with wall panels

single sliding door



vertical section



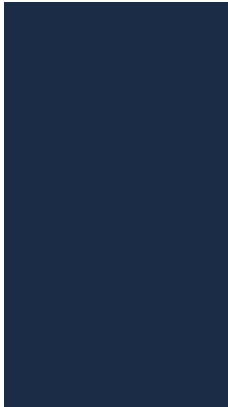
\_Dimensions in millimeters.

The right to discontinue and make changes is reserved.

This information is based on the latest product information available at the time of printing.

\_materials & finishes

lacquering



Matt lacquered



Available in all  
RAL / NCS colors

\_The finishes shown are indicative and refer to the entire production range.  
Laurameroni reserves the right to modify the range without warning.

\_handles



Recessed satin steel handle



Recessed satin steel handle with lock



\_maintenance

**PAINTS, LACQUERINGS AND  
SPECIAL FINISHES**

Do not use acid or alkaline detergents, agents with bleaching additives, abrasive powders, steel wool, sponges or the like. Do not use furniture polish or solvents to care for painted surfaces. Anything hot or humid can cause surface damage. Pointed or sharp objects, such as blades or knives, can cause damage to the surface. For the cleaning and care, regularly wipe the surfaces with a clean, soft, lint-free cloth to remove dust while avoiding abrasion. For soft-finish painted surfaces, use a soft, lint-free, slightly damp cloth. If heavily soiled, painted surfaces can be cleaned with a neutral, silicone-free detergent. Finally, it is essential to gently rub dry surfaces, so that there is no residual moisture.

**TINTE, LACCATURE E FINITURE  
SPECIALI**

Non usare detersivi acidi o alcalini, agenti con additivi sbiancanti, polveri abrasive, lana d'acciaio, spugne o simili. Non utilizzare lucidi per mobili o solventi per la cura delle superfici verniciate. Qualsiasi cosa calda o umida può causare danni alla superficie. Oggetti appuntiti o taglienti, come lame o coltelli, possono causare danni alla superficie. Per la pulizia e la cura, pulire regolarmente le superfici con un panno pulito, morbido e privo di lanugine per rimuovere la polvere evitando l'abrasione. Per le superfici verniciate con finitura morbida, utilizzare un panno soffice, privo di lanugine e leggermente umido. Se molto sporche, le superfici verniciate possono essere pulite con un detersivo neutro privo di silicone. È infine essenziale strofinare gentilmente le superfici asciutte, in modo che non sussista umidità residua.

**BEDIF  
FEREN  
TBEUN  
IQUE.**

LAURAMERONI s.r.l.  
22040 Alzate Brianza (Como)  
Via Manzoni, 2784  
T +39 031 761450  
info@laurameroni.com  
www.laurameroni.com