

Plain pivot door - Plain collection

design Laura Meroni

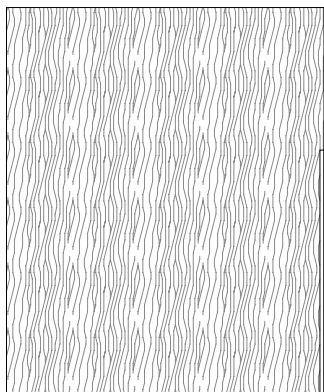


Plain Pivot Door in wood or fabric, available in all the wood essences of the collection or in aniline-stained oak in all RAL colours. The door is also available in the brushed matt lacquered version or upholstered in fabric. Wooden handle carved into the thickness of the door and aluminium rail in the same finish.

Porta Pivot Plain in legno o tessuto, disponibile in tutte le essenze di legno della collezione o in rovere tinto anilina in tutti i colori RAL. La porta è inoltre disponibile anche nella versione laccata opaco spazzolato oppure rivestita in tessuto. Maniglia in legno scavata nello spessore della porta e binario in alluminio nella stessa finitura.

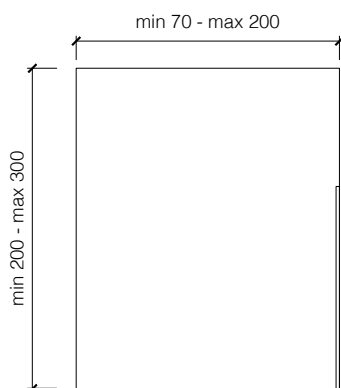
_range

plain wood



BD 16 PL pivot door - porta pivot - porte pivotante
pivot Tür - Дверь pivot

_dimensional limits



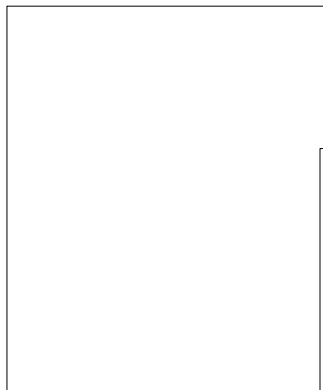
Dimensions in centimeters.

The right to discontinue and make changes is reserved.

This information is based on the latest product information available at the time of printing.

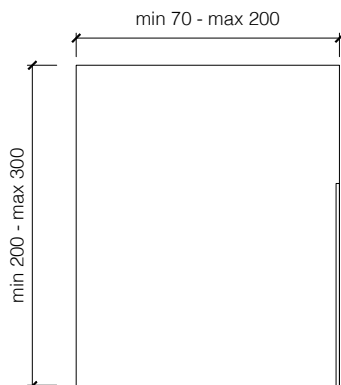
_range

brushed matt laquered



BD 16 PA pivot door - porta pivot - porte pivotante
pivot Tür - Дверь pivot

_dimensional limits

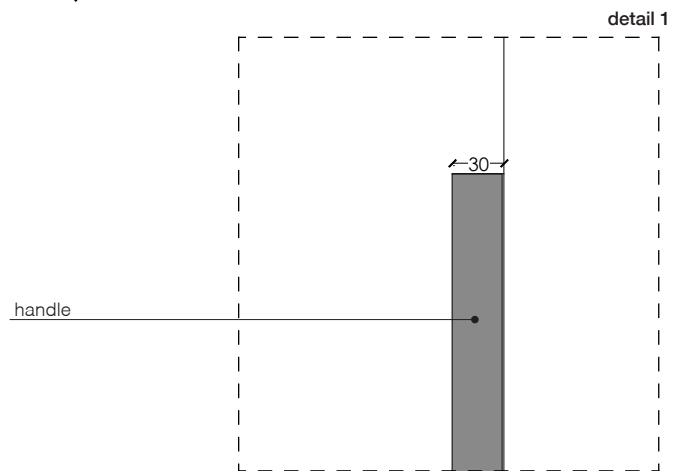
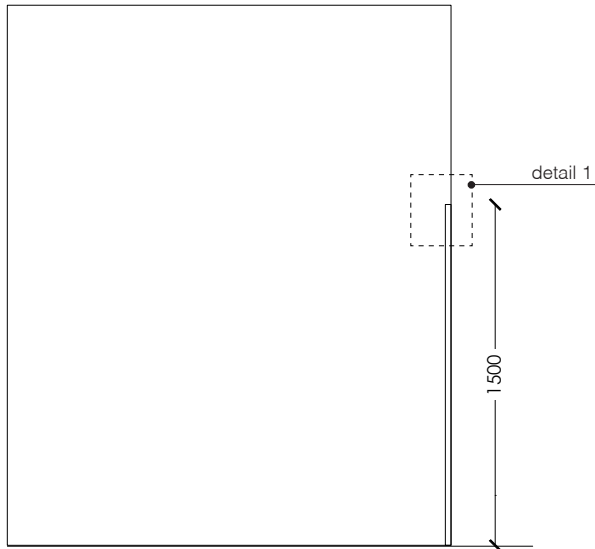


Dimensions in centimeters.

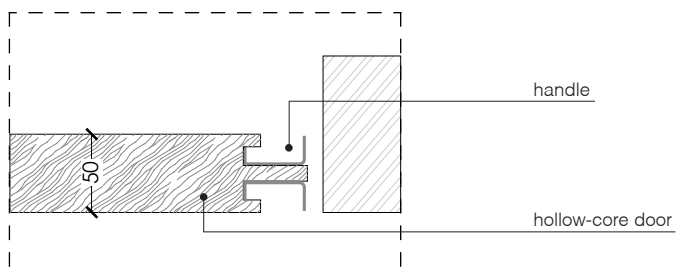
The right to discontinue and make changes is reserved.

This information is based on the latest product information available at the time of printing.

_details



door section



Dimensions in centimeters.

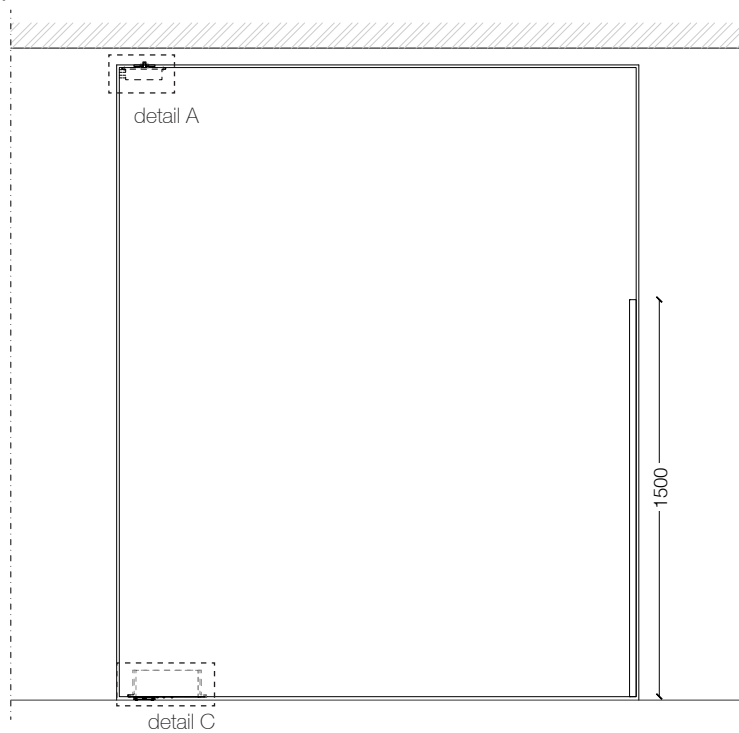
The right to discontinue and make changes is reserved.

This information is based on the latest product information available at the time of printing.

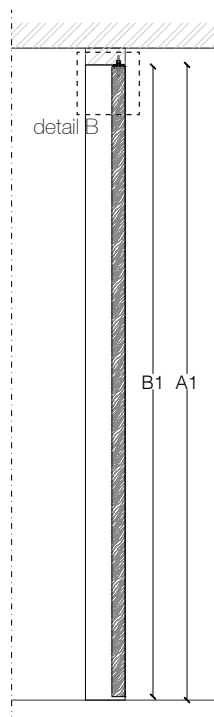
_dimensions

door without doorframe

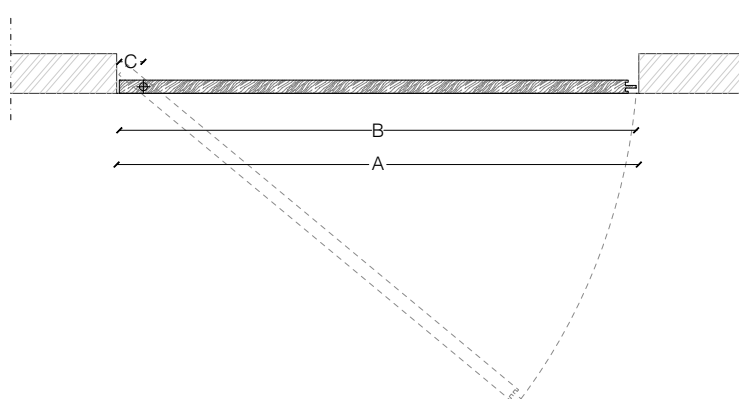
pivot door



vertical section



horizontal section



legend

A = door way

B = door

C = min. distance between
centres

A - 20 mm
> 91 mm

A1 = door way

B1 = door

A1 - 23 mm

Dimensions in millimeters.

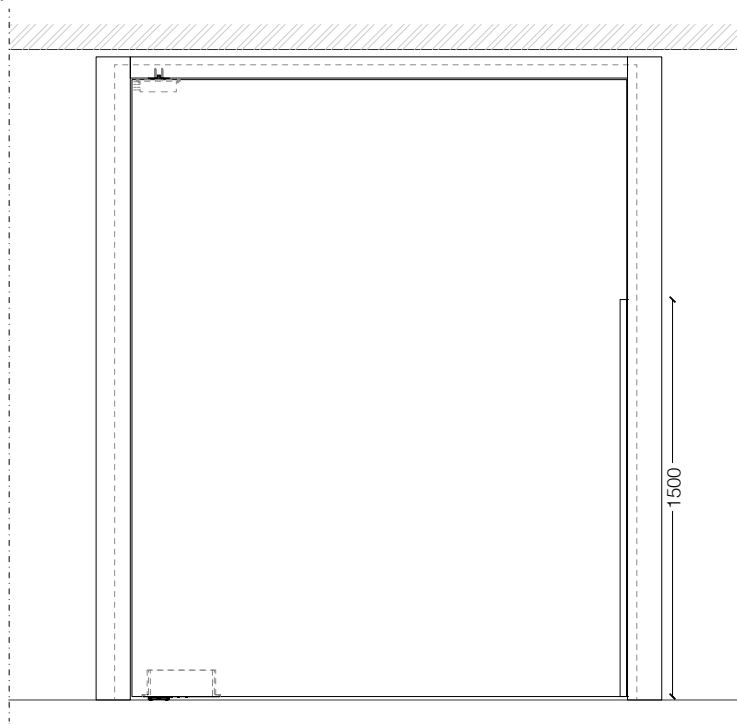
The right to discontinue and make changes is reserved.

This information is based on the latest product information available at the time of printing.

_dimensions

door with doorframe

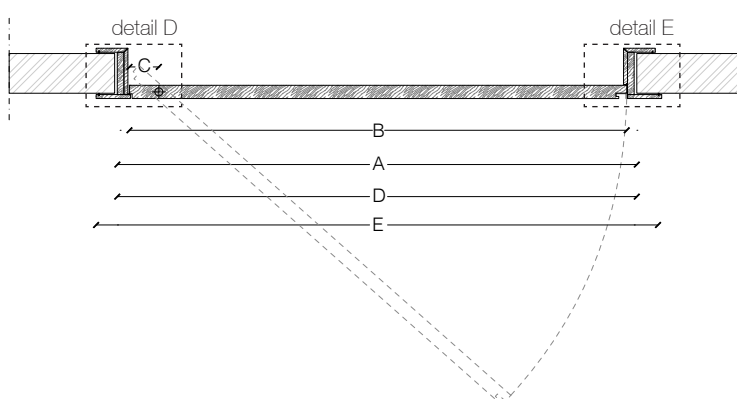
pivot door



vertical section



horizontal section



legend

A = door way

B = door

C = min. distance between centres

D = doorframe dimensions

E = covering dimensions

A - 84 mm
B > 91mm

A - 20 mm
A + 150 mm

A1 = door way

B1 = door

D1 = doorframe dimensions

E1 = covering dimensions

A - 70 mm

A - 18 mm

A + 27 mm

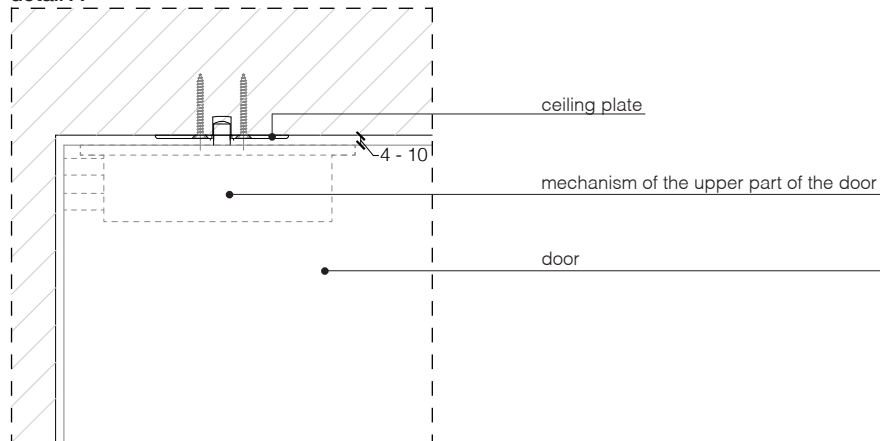
Dimensions in millimeters.

The right to discontinue and make changes is reserved.

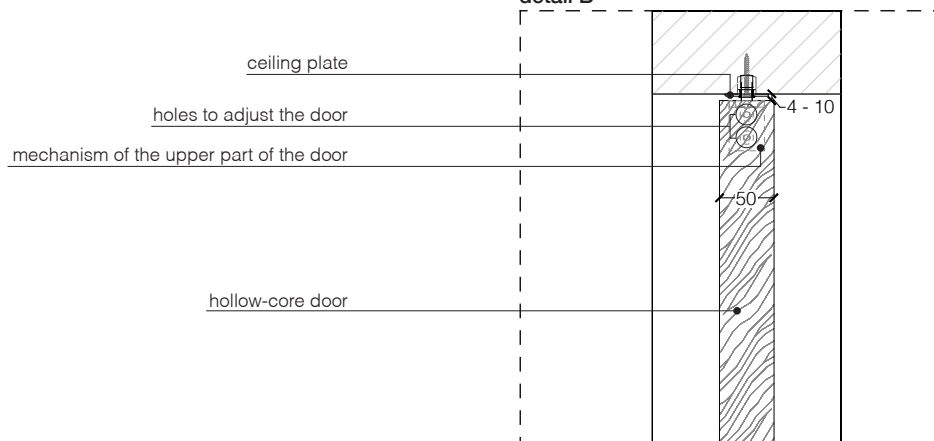
This information is based on the latest product information available at the time of printing.

_details

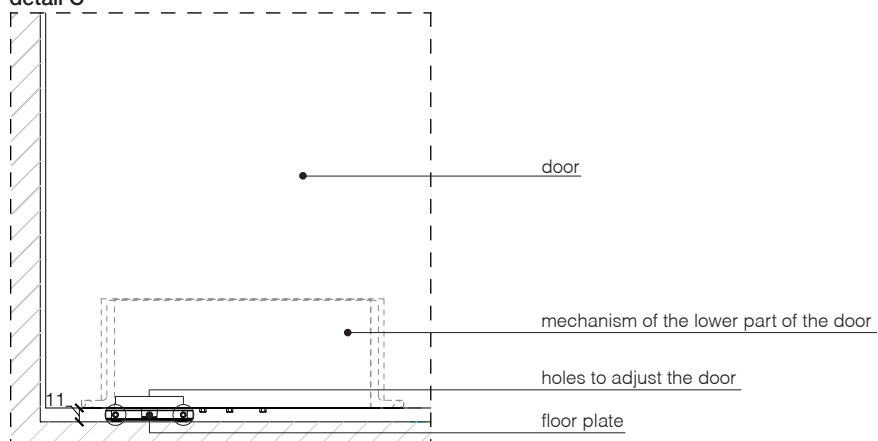
detail A



detail B



detail C



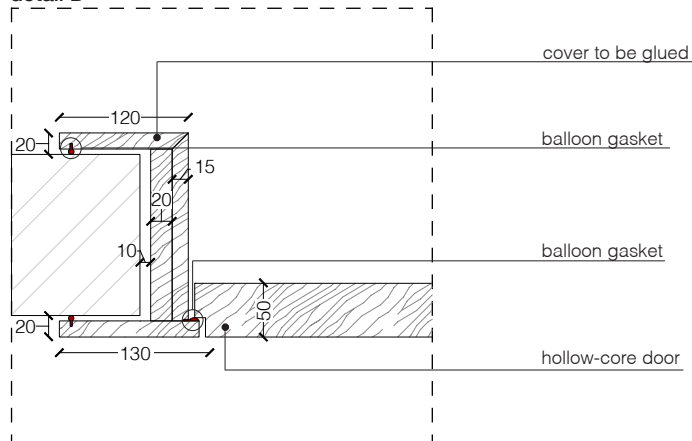
_Dimensions in millimeters.

The right to discontinue and make changes is reserved.

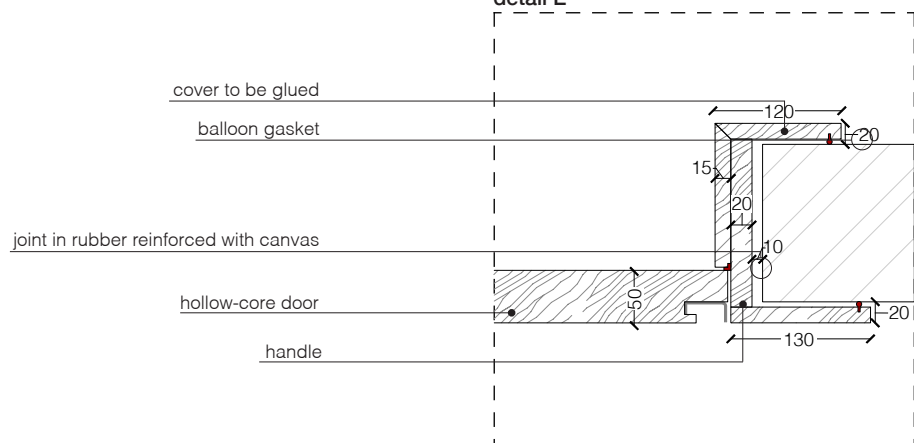
This information is based on the latest product information available at the time of printing.

_details

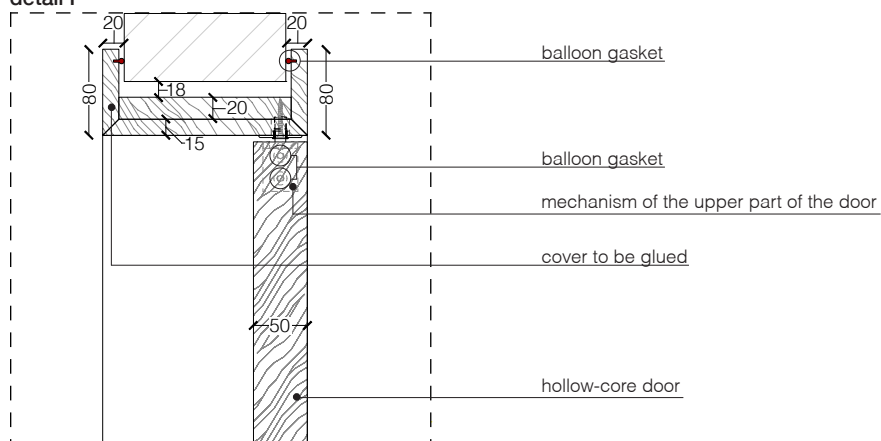
detail D



detail E



detail F



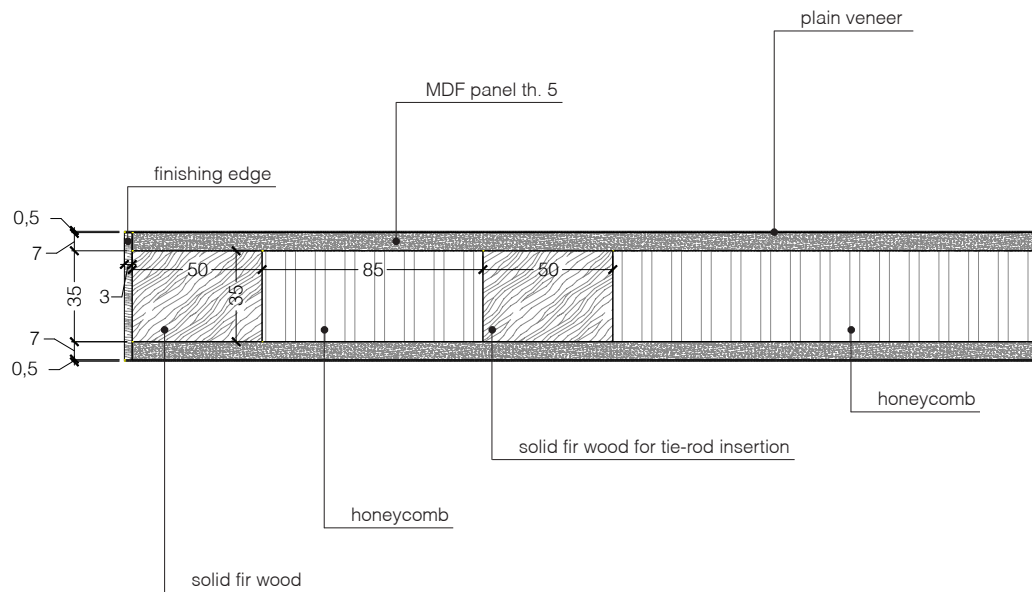
Dimensions in millimeters.

The right to discontinue and make changes is reserved.

This information is based on the latest product information available at the time of printing.

_details

section of the door



Dimensions in millimeters.

The right to discontinue and make changes is reserved.

This information is based on the latest product information available at the time of printing.

_materials & finishes

plain woods



Maple



Oak



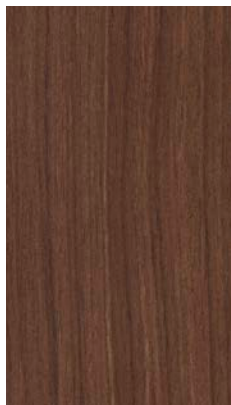
Teak



Zebrano



Canaletto Walnut



Dyed Canaletto walnut



Mahogany



Ebony



Termocotto Oak



Rosewood



Wenge

_The finishes shown are indicative and refer to the entire production range.
Laurameroni reserves the right to modify the range without warning.

_materials & finishes

plain woods



Aniline dyed



Available in all
RAL / NCS colors

_The finishes shown are indicative and refer to the entire production range.
Laurameroni reserves the right to modify the range without warning.

_materials & finishes

brushed matt laquered



Brushed matt laquered



Available in all
RAL / NCS colors

_The finishes shown are indicative and refer to the entire production range.
Laurameroni reserves the right to modify the range without warning.

_maintenance

WOOD

To maintain the natural wood features and protect them from mechanical and chemical wear, the veneered surfaces are coated with a high-quality transparent varnish. Do not use acid or alkaline detergents, agents with bleaching additives, abrasive powders, steel wool, sponges or the like. Anything hot or humid can cause surface damage. Remove dirt and liquids immediately.

For the cleaning and care, it is best to use a soft, dry cloth. If necessary, the cloth can be slightly dampened and dipped in neutral detergent thoroughly diluted in water. The cloth should only be slightly damp to avoid discoloration or swelling of the surface. Finally, it is essential to gently rub dry surfaces, so that there is no residual moisture.

LEGNO

Per mantenere il carattere naturale del legno e proteggerlo dall'usura meccanica e chimica, le superfici impiallacciate sono rivestite con una vernice trasparente di alta qualità. Non usare detergenti acidi o alcalini, agenti con additivi sbiancanti, polveri abrasive, lana d'acciaio, spugne o simili. Qualsiasi cosa calda o umida può causare danni alla superficie. Rimuovere immediatamente sporco e liquidi. Per la pulizia e la cura, è preferibile utilizzare un panno morbido e asciutto. Eventualmente il panno può essere leggermente inumidito ed intinto in detergente neutro abbondantemente diluito in acqua. Il panno deve essere solo leggermente umido, per evitare scolorimenti o rigonfiamenti della superficie. È infine essenziale strofinare gentilmente le superfici asciutte, in modo che non sussista umidità residua.

_maintenance

**PAINTS, LACQUERINGS AND
SPECIAL FINISHES**

Do not use acid or alkaline detergents, agents with bleaching additives, abrasive powders, steel wool, sponges or the like. Do not use furniture polish or solvents to care for painted surfaces. Anything hot or humid can cause surface damage. Pointed or sharp objects, such as blades or knives, can cause damage to the surface. For the cleaning and care, regularly wipe the surfaces with a clean, soft, lint-free cloth to remove dust while avoiding abrasion. For soft-finish painted surfaces, use a soft, lint-free, slightly damp cloth. If heavily soiled, painted surfaces can be cleaned with a neutral, silicone-free detergent. Finally, it is essential to gently rub dry surfaces, so that there is no residual moisture.

**TINTE, LACCATURE E FINITURE
SPECIALI**

Non usare detersivi acidi o alcalini, agenti con additivi sbiancanti, polveri abrasive, lana d'acciaio, spugne o simili. Non utilizzare lucidi per mobili o solventi per la cura delle superfici verniciate. Qualsiasi cosa calda o umida può causare danni alla superficie. Oggetti appuntiti o taglienti, come lame o coltelli, possono causare danni alla superficie. Per la pulizia e la cura, pulire regolarmente le superfici con un panno pulito, morbido e privo di lanugine per rimuovere la polvere evitando l'abrasione. Per le superfici verniciate con finitura morbida, utilizzare un panno soffice, privo di lanugine e leggermente umido. Se molto sporche, le superfici verniciate possono essere pulite con un detersivo neutro privo di silicone. È infine essenziale strofinare gentilmente le superfici asciutte, in modo che non sussista umidità residua.

**BEDIF
FEREN
TBEUN
IQUE.**

LAURAMERONI s.r.l.
22040 Alzate Brianza (Como)
Via Manzoni, 2784
T +39 031 761450
info@laurameroni.com
www.laurameroni.com