

Stars cabinet system - Stars collection

design Bartoli Design



Cabinet system covered in Stars metal bands, made-to-measure in modules of different sizes, with open compartments, LED lighting and customized accessories.

Customizable in all the metals of the Stars collection.

Sistema armadio rivestito di bande metalliche Stars, disponibile su misura in moduli di diverse dimensioni, con vani a giorno, illuminazione LED ed accessori personalizzati.

Personalizzabile in tutti i metalli della collezione Stars.



Stars cabinet system - Stars collection

design Bartoli Design



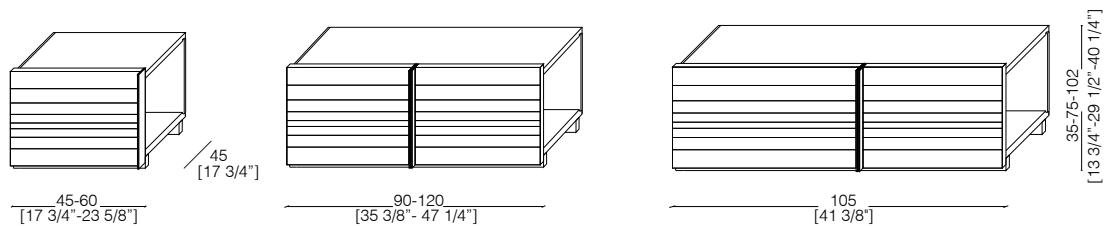
The Stars day system is a flexible and elegant solution that can be composed in multiple wardrobe versions and combined with integrated wall panels and doors from the same collection.

L'armadio giorno Stars è una soluzione flessibile ed elegante che può essere composta in molteplici declinazioni di armadi e combinata con sistemi boiserie e porte integrate della medesima collezione.

_dimensions

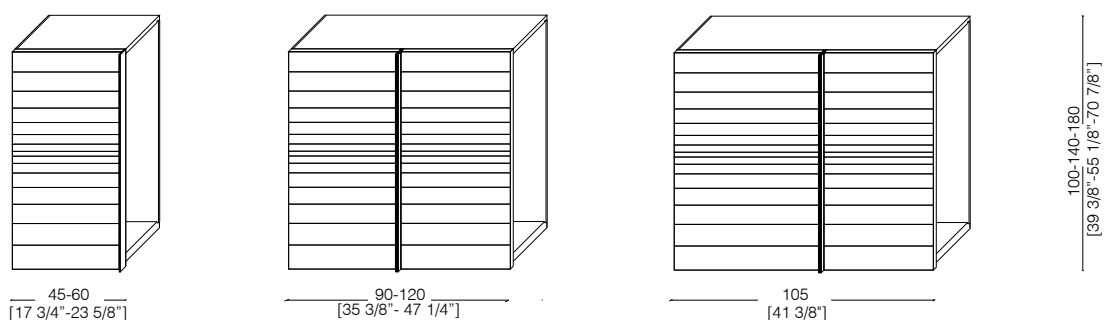
bases

basamenti – piétements – Unterstruktur – Нижний шкаф



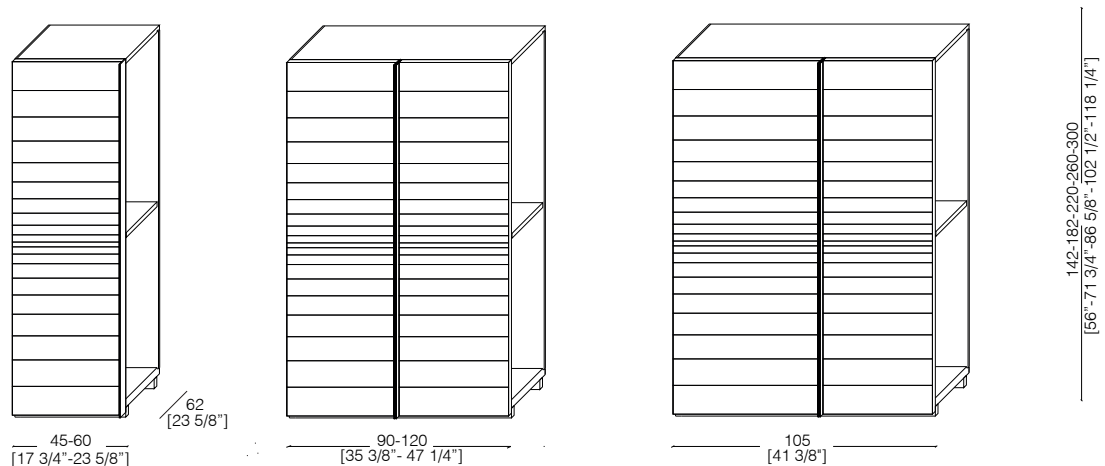
hanging unit

pensile – élément mural – hängeschrank- Навесной шкаф



columns

colonne – colonnes – Säulen - колонны



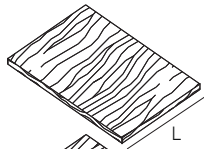
-Dimensions in centimeters and inches.

The right to discontinue and make changes is reserved.

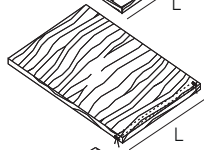
This information is based on the latest product information available at the time of printing.

_dimensions

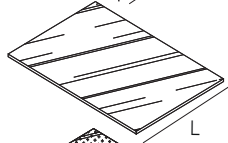
shelf
L. 42,5 / 57,5 / 87,5 / 102,5 / 117,5



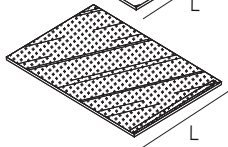
adjustable shelf



fixed shelf with led

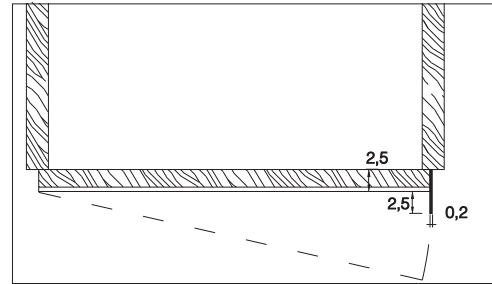


adjustable crystal shelf



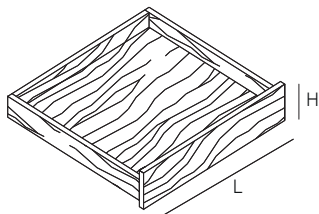
adjustable crystal fumé shelf

handles detail

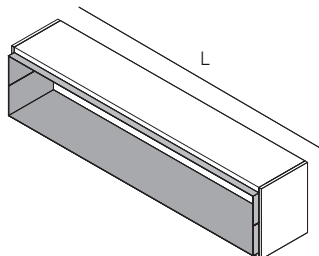


the handle has the same height as the element

internal drawer
L. 34 / 49 / 79 / 94 / 109
H. 10/14/19



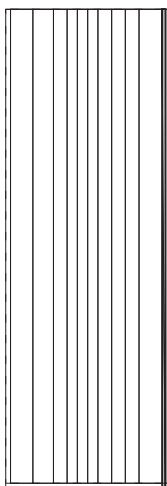
niche
L. 197,5 / 257,5



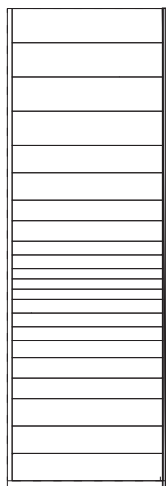
-Dimensions in centimeters and inches.
The right to discontinue and make changes is reserved.
This information is based on the latest product information available at the time of printing.

_dimensions

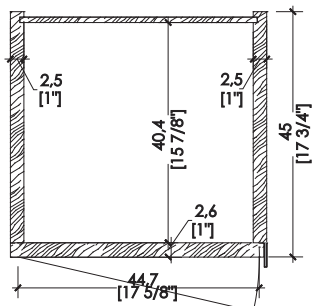
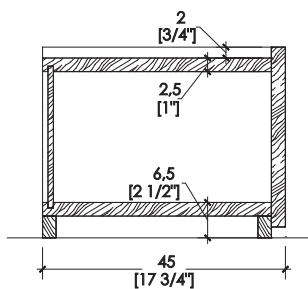
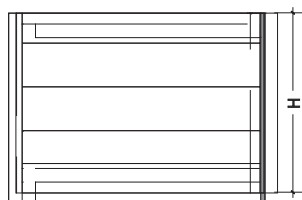
vertical stars carving



horizontal stars carving



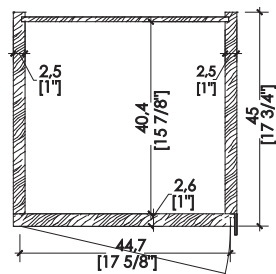
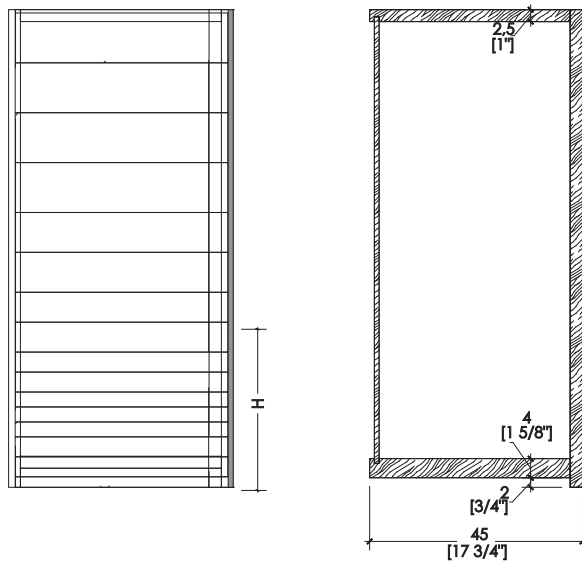
element for base unit



-Dimensions in centimeters and inches.
The right to discontinue and make changes is reserved.
This information is based on the latest product information available at the time of printing.

_dimensions

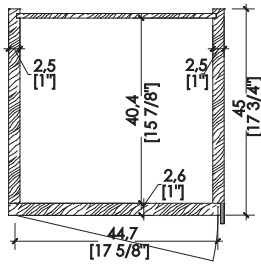
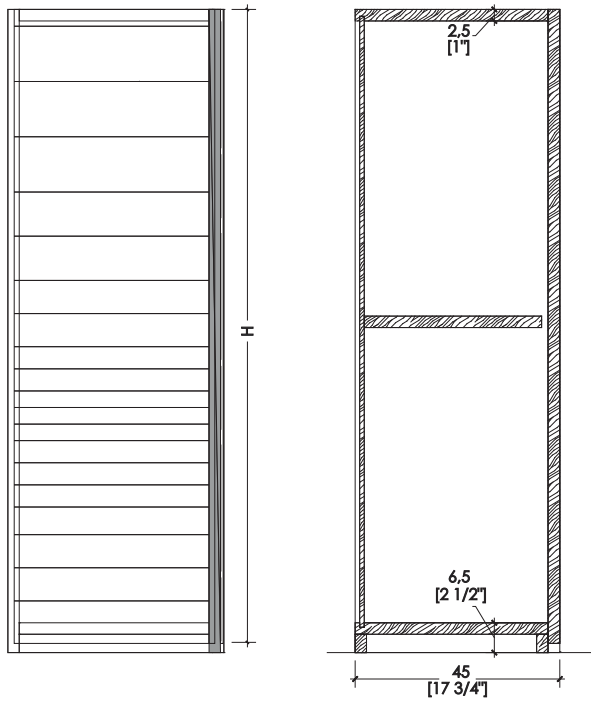
element for hanging unit



-Dimensions in centimeters and inches.
The right to discontinue and make changes is reserved.
This information is based on the latest product information available at the time of printing.

_dimensions

element for hight storage unit



-Dimensions in centimeters and inches.
The right to discontinue and make changes is reserved.
This information is based on the latest product information available at the time of printing.

_materials & finishes



Black Iron "Genere"



Burnished brass



Satin brass



Burnished copper



Satin copper

The finishes shown are indicative and refer to the entire production range.
Laurameroni reserves the right to modify the range without warning.

_maintenance

METAL & LIQUID METAL

To maintain the natural features of the metal and to protect the specific craftsmanship from oxidation and discoloration, the metal surfaces are coated with a high-quality transparent varnish. Do not use acid cleaners, solvents or alkalis. Do not use abrasive agents, steel wool, pot cleaners, glass cleaners, aggressive solvents, dyes, bleach or the like. Pointed or sharp objects, such as blades or knives, can cause damage to the surface. Anything hot or humid can cause surface damage.

For cleaning and care, remove light dirt with a soft cloth and a neutral household cleaning product well diluted in water. Gently clean the metal parts by hand with cold or warm water and dry immediately with a soft cloth.

METALLO & METALLO LIQUIDO

Per mantenere il carattere naturale del metallo e tutelare la specifica lavorazione artigianale da ossidazione e scolorimento, le superfici metalliche sono rivestite con una vernice trasparente di alta qualità.

Non utilizzare detergenti acidi, solventi o alcali. Non usare agenti abrasivi, lana d'acciaio, detergenti per pentole, detergenti per vetri, solventi aggressivi, coloranti, candeggina o simili. Oggetti appuntiti o taglienti, come lame o coltelli, possono causare danni alla superficie. Qualsiasi cosa calda o umida può causare danni alla superficie.

Per la pulizia e la cura, rimuovere lo sporco leggero con un panno morbido ed un prodotto neutro per la pulizia della casa abbondantemente diluito in acqua.

Pulire delicatamente a mano le parti metalliche con acqua fredda o tiepida ed asciugare immediatamente con un panno morbido.

**BEDIF
FEREN
TBEUN
IQUE.**

LAURAMERONI s.r.l.
22040 Alzate Brianza (Como)
Via Manzoni, 2784
T +39 031 761450
info@laurameroni.com
www.laurameroni.com